

Middle School 101 For Parents

We OWN what we do, and GRIT gets us through!

MORNING ARRIVAL

- Doors open at 8:20 am.
- Car rider drop off is in the front circle drive.
- Students remain in the parent vehicle until 8:20 (when staff arrive on duty).
- For safety reasons, we ask that you do not drop students in the parking areas.
- There is no supervision for students who are dropped off prior to 8:20 am.

CLUB EXCEL

2023-2024

Garcia Middle School

Morning Program: 7:00 AM-8:20 AM

\$110/Month

All programs require a non-refundable \$50 registration fee

*Students are able to check themselves in
(with parent permission)*



WWW.EZCHILDTRACK.COM/FBISDELD/PARENT



EXTENDEDLEARNING@FORTBENDISD.COM

PHONE: (281) 634-4220

AFTERNOON DISMISSAL

- Dismissal is at 4:10 pm. If students do not ride a bus, they must leave campus grounds promptly when dismissed. There is no supervision for students after 4:20 pm.
- For safety reasons, students should be picked from the front circle drive. Students will not be allowed to walk across the staff parking lot or the front parking lot.
- Please wait in the pick-up line for students to load into the car from the sidewalk.

THANK YOU in advance for keeping our students SAFE!!!

Rainy Weather Dismissal

- Dismissal will continue at 4:10 even in the event of rainy weather.
- Walkers and bike riders need to have a plan worked out with their parents in this scenario.
- Good idea to have a packable parka and/or small umbrella.

CAFETERIA



Students may bring cash or parents may deposit money to lunch account via online system.

Go to <https://www.schoolcafe.com/fbisd>,



Breakfast served from 8:20 – 8:45

Breakfast - Students \$2.00

Reduced Price - \$.00



Lunch times – see Bell Schedule

Lunch - Secondary \$3.00

Reduced Price - \$.40



Free/Reduced lunch applications **MUST** be completed **ONLINE** and renewed each year at <https://www.schoolcafe.com/fbisd> The online application opens on August 1st.

Parent lunch with students

- Parent lunch with students is reserved for special occasions. **ex.** Birthdays
- Parent calls front office ahead of time to make arrangements
- Parent may only bring food for their child

No Deliveries



Emergency Information

- Navigate to Skyward Family Access on the FBISD website.
- List any names and numbers of people that you trust to pick up your child if he/she is ill or if an emergency occurs.
- We will not release your child to someone who is not listed, even if we receive your verbal permission over the phone. For your child's safety, we must have written authorization.

Skyward Family Access

- Complete Student Verification process
Due by August 18, 2023
- Gain Student Password Information
- Access to on-line progress reports and report cards
- View current grades/missing assignments
- Receive and send messages to teachers
- View students' schedule
- Add money to students' breakfast/lunch account

ATTENDANCE

- Attendance is taken every class period in middle school.
- It is not necessary to call the school before the absence.
- Students should not be calling/texting parents to be picked up. The clinic will contact you if it is necessary for your student to go home early.
- Parents are not required to check students in; students can check in themselves with a note.
- Students will only be released to authorized adults with valid photo ID.
- Please allow sufficient time when picking up for appointments.
- Students will not be released after 3:40 pm.
- More detailed info on GMS website.

When Absent...

- Absence notes must be received within 5 days of returning to school.
- A doctor's note is needed after 4 or more consecutive days of being absent.
- You may email your absence note to **ATTENDANCEGMS@fortbendisd.com** or bring it into the front office.
- You may also fill out the Absence Note Form on the **GMS website** by going to **STUDENT & PARENTS, ATTENDANCE**, then **ATTENDANCE NOTES**. This allows you to submit the note directly to the attendance clerk.

Nurse

- Nurse: Mr. Arnett & Mrs. Rose
- Contact Information: 281-634-3232
- Medication must be dropped off and picked up by the parent.
- Prescription meds must appropriate documents filled out and over the counter meds require a parent signature
- Students are not allowed to transport prescription or over the counter medicine.

Tutorials

- Tutorial dates and times for each subject area will be posted on each teachers' web page and in the weekly SMORE newsletter by the 2nd week of school.

Clubs & Organizations

Club sponsors will get started after the first few weeks of school.

- Art Club
- AVID
- Book Club
- Chess Club
- Coding Club
- Game Club
- Dance Club
- Gator Girls
- Japanese club
- Male Mentors
- Math Counts
- National Jr Honor Society
- No Place for Hate Coalition
- PALS
- Planner Club
- Robotics Club
- Spanish Club
- Student Council
- WEB (Where Everybody Belongs)

Grades/Late Work

- **Grades** consist of a minimum of 6 daily grades and 3 major grades per grading period.
- **Major Grades** will count as 50% and **Daily Grades** will count as 50% of the students' grade.
- **Make-up Work** due to unplanned absence or due to extracurricular activities should be obtained upon your return. Students will be given the same number of days he/she was absent to complete the missed assignment(s).
- **Late Work** will be accepted with points deducted at a rate of 10pts per day. After the 3rd day, late work submission is no longer an option.
- Middle school courses do not have semester or final exams.

Schoology

- Monitor Assignments and Due Dates
- Review Course Materials
- Communicate with Teachers
- Provide Encouragement and Support
- Support Organization Skills
- Encourage Independence

Technology Device Policy

At 8:45 a.m. morning dismissal?

IN THE BACKPACK.

Waiting for your teacher to let you into class?

IN THE BACKPACK

In the classroom before the bell rings?

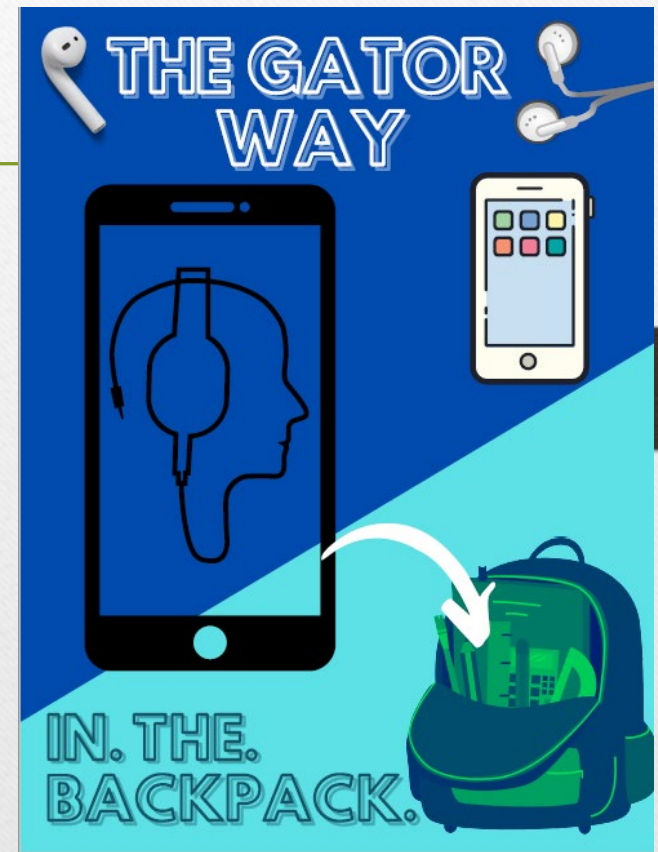
IN THE BACKPACK

During class WITHOUT teacher permission?

IN THE BACKPACK

Transitioning to classes?

IN THE BACKPACK



Misuse of Technology Device Policy

- Cell phones/devices may be confiscated when students have them out without permission.
- Confiscated phones/devices are turned into the front office and can be picked up by the student at the end of the day.
- The student receives an office referral each time the phone is confiscated.
- On the 3rd time the phone is confiscated, the parent must pick up the phone and there is a \$15 charge. (Cash Only; Exact change)



DRESS CODE

Students must comply with the following dress and grooming standards:

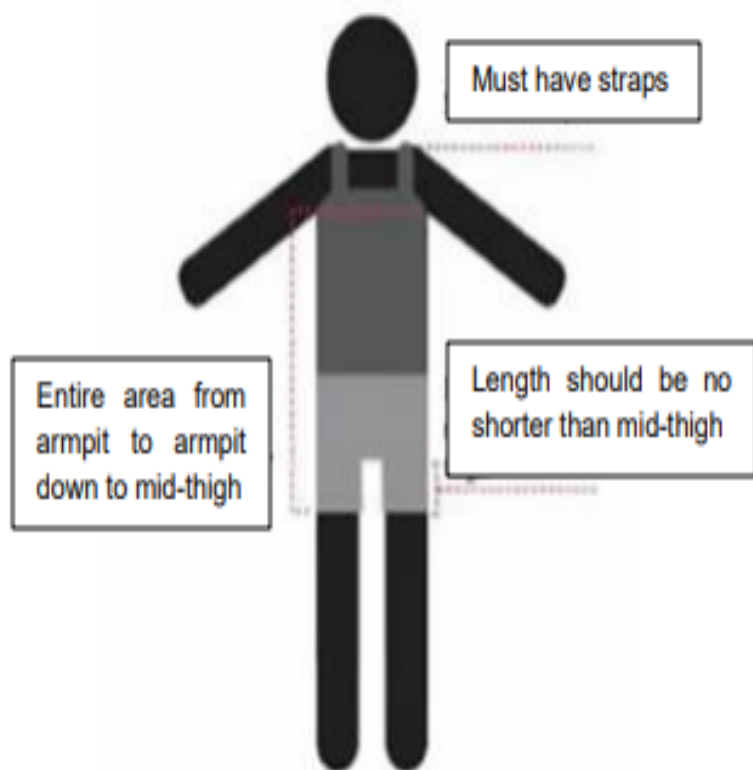
Shirts, Blouses, Sweatshirts, Sweaters, Vests

- Shirts, blouses, sweatshirts, sweaters, vests that expose undergarments and/or midriff are prohibited;
- Shirts, blouses, sweatshirts, sweaters, vests must not depict or reference alcohol, drugs, tobacco, weapons, nudity, gang affiliation, death, violence, vulgar or obscene language or images, and/or insults to race, religion, gender, or ethnicity, or other emblems or writing that may be expected to cause a material or substantial disruption of, or inference with, normal school operations.

Dresses, Jumpers, Skirts, Shorts, Skorts, Pants, and Jeans

- Dresses, jumpers, skirts, and skorts may be worn at a length that is slightly above mid-thigh;
- Shorts, jeans, and all pants shall be worn at the hip or higher and must cover undergarments;
- Shorts may be worn at a length that is slightly above mid-thigh;
- Athletic wear, which may include yoga pants, stretch leggings and fitness tights, are permissible as long as they do not reveal undergarments, have sections of see-through material, are worn with a shirt that covers the posterior, or are disruptive to the school environment.

ALL STUDENTS



Clothing must cover areas from one armpit to the other armpit, down to the mid-thigh. Tops must have shoulder straps and be long enough to adequately cover the waistline and not expose the midriff.

Consequences for Dress Code Violations

- Student given opportunity to phone home for a change of clothes.
- Campus will loan shirt/shorts on the first offense so that instructional time is maximized.
- A referral is entered into Skyward for documentation.
- Student MAY NOT wear PE Uniform outside of gym class.

Vaping

- **HB114**

Mandatory DAEP placement for selling, delivering, or in possession of e-cigarettes, marihuana, controlled substance or dangerous drug.

If DAEP is at capacity, the student can be placed in ISS for the duration of the of the time to be served.



Making Smart Choices

- Refrain from phrases that can be perceived as threatening or harmful.
- Keep your hands and feet to yourself.
- If there is a problem, students should report it to the counselor or assistant principal by filling out a Statement Form.
- Your words or actions can lead to disciplinary actions that may include criminal charges.
- Think before you react!!!

PE Uniforms

- Visit GMS website
- Click the RevTrack icon:
- Select PE Uniforms
- Uniforms delivered to students after the 1st week of school.
- We suggest you write your child's name inside of the uniform, in case it is lost.
- **The link will open once school starts.**



LOCKERS

-
- Academic Lockers will not be used this year. Students will carry their backpacks
 - Students will need to **purchase** a combination lock for use in PE
 - If students are in BAND, they will need a second combination lock for their BAND locker.
 - Check Target or Wal-mart for a TWIN pack, 2 locks with the same combination!
 - YouTube videos to teach kids how to use lock.

TARDIES

- Tardies accumulate for all classes throughout the 9-week grading period.
- Consequences begin at 4 tardies and escalate if tardies persist.
- Review your child's schedule and help him/her find the best route to/from classes.
 - WEB Leaders will be helping with this
 - Encourage your child to plan a bathroom routine

Student IDs

- The district is working on plans for students to be issued a picture ID.
- Once IDs are distributed, students will be required to wear the ID as part of the dress code.

Stay Informed

- **Family Access through Skyward**
 - Check grades, cafeteria balances, tardies, attendance
 - Set notifications based on preferences
 - Contact teachers via e-mail
- **Weekly Smore Newsletter**
- **Campus Website:** www.fortbendisd.com/gms
- **Schoology**
- **Follow us on Twitter:** [@GarciaMS_Gators](https://twitter.com/GarciaMS_Gators)

First Day of SCHOOL...

- Students only need a pen/pencil
- Send a sack lunch the first week if possible
- Make sure your child knows his full address and phone number
- If he/she is a bus rider, please have him/her ride the bus to and from school on the first day to help us establish routines & procedures
- Be aware that bus routes will be running a little slower than usual on the first few days as drivers/students get used to new routes
- 6th graders will be directed to report to the gym and be assisted by **WEB Leaders** in finding their **1st Period** teacher's name and taking a seat in that teacher's section.
- The middle school campus is a NO PARENT zone 😊

2023-2024 Bell Schedule- Garcia Middle School



Regular Schedule- Monday, Thursday, & Friday

6th Grade- B LUNCH AM Block

1st/2nd Block	8:55-10:20
2nd/3rd Block	10:25-11:45
B LUNCH	11:50-12:20
4th Period	12:25-1:20
5th Period	1:25-2:20
6th Period	2:25-3:15
7th Period	3:20-4:10

6th Grade- B LUNCH PM Block

1st Period	8:55-9:50
2nd Period	9:55-10:45
3rd Period	10:50-11:45
B LUNCH	11:50-12:20
4th Period	12:25-1:20
5th/6th Block	1:25-2:50
6th/7th Block	2:55-4:10

7th Grade- A Lunch

1st Period	8:55-9:50
2nd Period	9:55-10:45
A LUNCH	10:50-11:20
3rd Period	11:25-12:20
4th Period	12:25-1:20
5th Period	1:25-2:20
6th Period	2:25-3:15
7th Period	3:20-4:10

8th Grade- C Lunch

1st Period	8:55-9:50
2nd Period	9:55-10:45
3rd Period	10:50-11:45
4th Period	11:50-12:45
C LUNCH	12:50-1:20
5th Period	1:25-2:20
6th Period	2:25-3:15
7th Period	3:20-4:10

Advisory Schedule- Tuesday, Wednesday

6th Grade- B LUNCH AM Block

1st/2nd Block	8:55-10:15
2nd/3rd Block	10:20-11:30
B LUNCH	11:35-12:05
4th Period	12:10-1:00
ADVISORY	1:05-1:40
5th Period	1:45-2:30
6th Period	2:35-3:20
7th Period	3:25-4:10

6th Grade- B LUNCH PM Block

1st Period	8:55-9:45
2nd Period	9:50-10:35
3rd Period	10:40-11:30
B LUNCH	11:35-12:05
4th Period	12:10-1:00
ADVISORY	1:05-1:40
5th/6th Block	1:45-2:55
6th/7th Block	3:00-4:10

7th Grade- A Lunch

1st Period	8:55-9:45
2nd Period	9:50-10:35
A LUNCH	10:40-11:10
3rd Period	11:15-12:05
4th Period	12:10-1:00
ADVISORY	1:05-1:40
5th Period	1:45-2:30
6th Period	2:35-3:20
7th Period	3:25-4:10

8th Grade- C Lunch

1st Period	8:55-9:45
2nd Period	9:50-10:35
3rd Period	10:40-11:30
4th Period	11:35-12:25
C LUNCH	12:30-1:00
ADVISORY	1:05-1:40
5th Period	1:45-2:30
6th Period	2:35-3:20
7th Period	3:25-4:10

Supply List

6th Gr

Description	Qty
1SUB WIDE RULED ASST SPIRAL 100CT	2
1" WHITE VIEW DURABLE VINYL BINDER	1
ASSORTED INSERTABLE PAPER DIVIDERS 8TAB	1
COLLEGE RULED 8X10.5 FILLER PAPER 200CT	3
7.25X10.25 CLEAR TOP PENCIL BAG W/GROMMETS	1
ASST HIGHLIGHTERS 4 PACK	1
FLUORESCENT YELLOW HIGHLIGHTER CHISEL TIP	1
CRAYOLA 7" COLORED PRESHARPENED PENCILS 12CT	1
NO2 PRESHARPENED YELLOW PENCIL (LATEX FREE)	12
REG. PENCIL SHARPENER W/ RECEPTACLE	1
PINK BEVEL ERASER (LATEX FREE)	1
7.25" POINTED TIP SCISSORS (AGES 8+)	1
ELMER'S SMALL PURPLE WASHABLE GLUE STICK .21OZ	4
1/2" X 450" SCOTCH TRANSPARENT TAPE W/DISPENSER	2
12" 1/16" STANDARD/METRIC PLASTIC RULER	1
PAPERMATE BLACK FLAIR MED FELT TIP PEN	1
SENTRY WIND-UPS STEREO EARBUDS W/CASE S-JACK	1
SCOTTIES TISSUE 110CT	4
WATERLESS HAND SANITIZER 8OZ WITH PUMP	2
WIDE RULED BLACK MARBLE COMP BOOK 100CT	4

7th Gr

Description	Qty
1SUB WIDE RULED ASST SPIRAL 100CT	2
ASSORTED POLY POCKET FOLDER W/ 3 HOLES	1
1" WHITE VIEW DURABLE VINYL BINDER	1
1.5" WHITE VIEW DURABLE VINYL BINDER	1
ASSORTED INSERTABLE PAPER DIVIDERS 8TAB	2
COLLEGE RULED 8X10.5 FILLER PAPER 200CT	4
8.5X11 TOP LOAD CLEAR SHEET PROTECTORS 1EA	10
7.25X10.25 CLEAR TOP PENCIL BAG W/GROMMETS	1
ASST HIGHLIGHTERS 4 PACK	1
FLUORESCENT YELLOW HIGHLIGHTER CHISEL TIP	1
CRAYOLA 7" COLORED PRESHARPENED PENCILS 12CT	1
NO2 PRESHARPENED YELLOW PENCIL (LATEX FREE)	12
REG. PENCIL SHARPENER W/ RECEPTACLE	1
PINK BEVEL ERASER (LATEX FREE)	1
7.25" POINTED TIP SCISSORS (AGES 8+)	1
ELMER'S SMALL PURPLE WASHABLE GLUE STICK .21OZ	4
1/2" X 450" SCOTCH TRANSPARENT TAPE W/DISPENSER	2
12" 1/16" STANDARD/METRIC PLASTIC RULER	1
SENTRY WIND-UPS STEREO EARBUDS W/CASE S-JACK	1
SCOTTIES TISSUE 110CT	2
WATERLESS HAND SANITIZER 8OZ WITH PUMP	2
WIDE RULED BLACK MARBLE COMP BOOK 100CT	3

8th Gr

Description	Qty
1SUB WIDE RULED ASST SPIRAL 100CT	1
1.5" WHITE VIEW DURABLE VINYL BINDER	1
2" WHITE VIEW ROUND RING DURABLE VINYL BINDER	1
ASSORTED INSERTABLE PAPER DIVIDERS 8TAB	2
COLLEGE RULED 8X10.5 FILLER PAPER 200CT	3
8.5X11 TOP LOAD CLEAR SHEET PROTECTORS 1EA	10
7.25X10.25 CLEAR TOP PENCIL BAG W/GROMMETS	1
CRAYOLA CRAYONS 24CT	1
ASST HIGHLIGHTERS 4 PACK	1
FLUORESCENT YELLOW HIGHLIGHTER CHISEL TIP	1
CRAYOLA 7" COLORED PRESHARPENED PENCILS 12CT	1
NO2 PRESHARPENED YELLOW PENCIL (LATEX FREE)	12
REG. PENCIL SHARPENER W/ RECEPTACLE	1
PINK BEVEL ERASER (LATEX FREE)	1
7.25" POINTED TIP SCISSORS (AGES 8+)	1
ELMER'S SMALL PURPLE WASHABLE GLUE STICK .21OZ	4
1/2" X 450" SCOTCH TRANSPARENT TAPE W/DISPENSER	2
12" 1/16" STANDARD/METRIC PLASTIC RULER	1
SENTRY WIND-UPS STEREO EARBUDS W/CASE S-JACK	1
SCOTTIES TISSUE 110CT	2
WATERLESS HAND SANITIZER 8OZ WITH PUMP	2
WIDE RULED BLACK MARBLE COMP BOOK 100CT	3
3X3 HIGHLAND YELLOW STICKY NOTES 1PAD 100SHTS	2

Gator Camp

The first day of school will be a revised bell schedule.

Each class period students will learn and practice different rules and procedures to get acclimated to the “Gator Way”

Campus Contacts

- **Teacher:** class related questions, assignments, grades
- **Grade level counselor:** schedule, relationships, resources
- **Grade level admin:** serious issues or concerns and for unresolved issues addressed with teacher/counselor
- **Attendance:** absence notes

Campus contacts continued

- **6th grade counselor:** Rolanda McKyer
- **6th grade admin:** Danielle Krantz
- **7th grade counselor:** Regina Titus
- **7th grade admin:** Carla Sweeney
- **8th grade counselor:** Malaika Easton
- **8th grade admin:** Nadia Riggs
- **Campus Principal:** Cory Collins



YOUR 6TH GRADER & THE LIBRARY

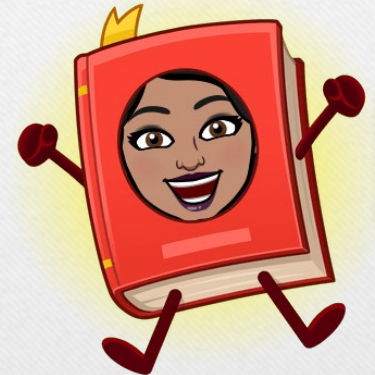
A Welcoming Space



We offer physical books &
e-books to students

Physical Books

- Your child will visit the library with their ELA class
- Students may check up to 3 physical books at a time
- Their books are due back in 2 weeks



E-books on Sora – No fines, no forgetting

- FBISD has access to e-books and audiobooks on Sora
- Log in through 1Link
- Digitally check out up to 3 books at a time



Before and After School

- Open 8:20 a.m. – 4:20 p.m.
- Each morning, we will have a different focus activity
- Your child is allowed to study, read, use makerspace materials, or participate in the morning activity



Scholastic Book Fair

- August 31 – Sept 7
- Preview books with ELA classes
- Open during Open House (Aug 31)
- Cashless e-wallet option available



Volunteers

1. Apply on the FBISD website
2. Fill out the Microsoft Form for GMS

GMS Library Volunteers Form



GMS PTO

President - Adrienne Baldwin

Vice President - Fauzia Aziz

Treasurer - Bernadette Nwaozo

Co-Treasurer - Neelima Potta

Secretary - Lauren Allaire

VIPS Coordinator - Michelle Atanu

Media Communications Coordinator –

Sharon Sasson

Fundraising Coordinator - Emily Hemstra

Teacher Appreciation Coordinator –

Tanya Mangum

Campus Programs Coordinator - Ayesha Ali

Membership & Spirit Wear Coordinator -

Jennifer Segee

Get involved!

- Membership
- Spirit Gear
- Committees